

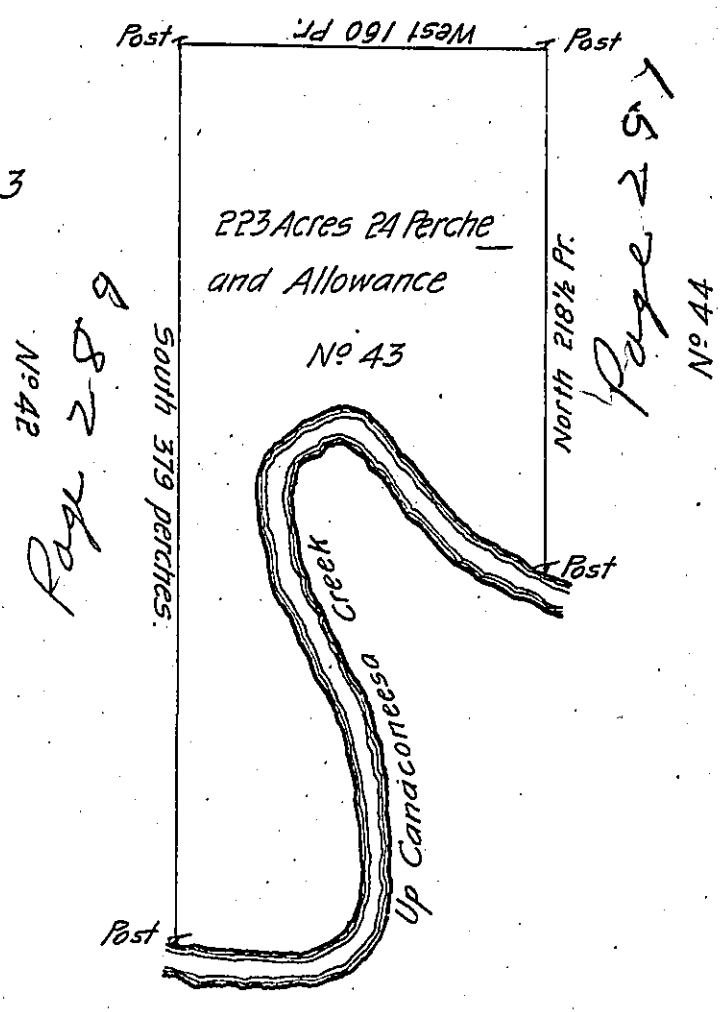
No 39

Part of District No 3

Courses up the Creek

- S 86° E 44. Pr.
- N 81 E 16. Pr.
- N 56 E 14. Pr.
- N 20 E 24. Pr.
- N 16 W 92. Pr.
- N 25 W 46. Pr.
- N 5 W 36. Pr.
- N 33 E 18. Pr.
- N 46 E 31. Pr.
- East 8. Pr.
- S 69 E 14. Pr.
- S 36 E 66. Pr.
- S 68 E 40. Pr.

449



In pursuance of an Act of Assembly passed the 12<sup>th</sup> day of March 1783 for the Sale of certain lands therein mentioned and by virtue of a Commission under the hand and Seal of Office of John Lukens Esquire Surveyor Generall for the State of Pennsylvania to me directed bearing date at Philad<sup>a</sup> the 14<sup>th</sup> of August 1783. the above tract of land containing two hundred and twenty three acres and twenty four perches & allowance of Six Pr. Cent for roads &c<sup>a</sup> was surveyed on the 14<sup>th</sup> day of June 1785 by

Sam<sup>l</sup> Nicholson

To John Lukens Esq<sup>r</sup>  
Surveyor Generall

IN TESTIMONY that the above is a copy of the original remaining on file in the Department of Internal Affairs of Pennsylvania, made conformably to an Act of Assembly approved the 16th day of February, 1833, I have hereunto set my Hand and caused the Seal of said Department to be affixed at Harrisburg, this twenty third day of November 1903.

*Geo. B. Brown*  
Secretary of Internal Affairs.

42.